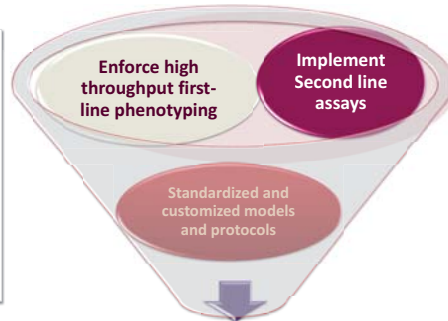


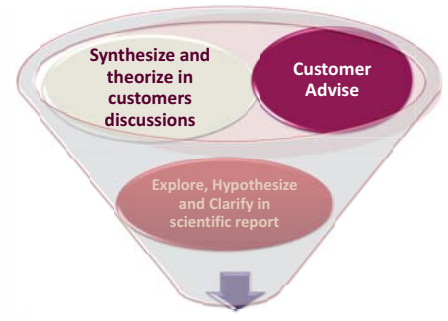
Cardiovascular Phenotyping Services

Missions

In vivo specific cardiovascular investigations and main models of pharmacological and surgical inductions of cardiovascular pathological states.



Design, Develop and Test



Improve by our research and development

Disease-Focused Research

Congenital cardiac disease
Ventricular dysfunction
Cardiac hypertrophy
Cardiac dilatation
Trouble of conduction and arrhythmias

Hypertension and hypotension

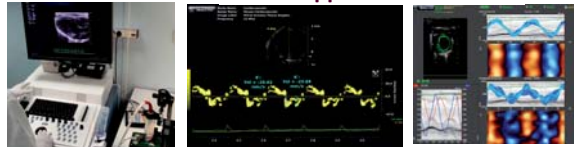
Vascular disease
(atherosclerosis plaque, Stenosis...)

Hemostasis disorders and others risk factors (diabetes, renal failure, lipid metabolism...)

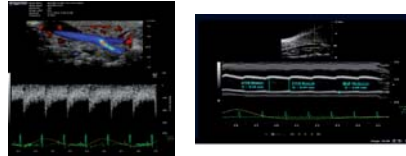
Cardiac and vascular anatomy and function by new Vevo® 2100 imaging system from Visualsonics

Tissue doppler

Strains



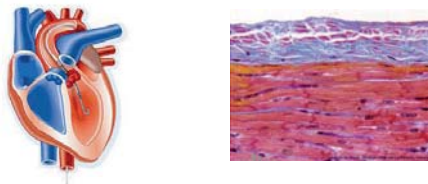
Carotid



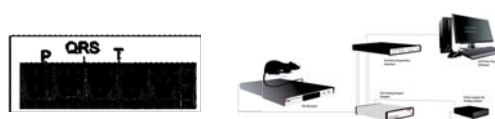
Blood pressure measurements (NIBP) and telemetry



Invasive catheterization and histology



Electrocardiography (acute and telemetry)



Models and challenges

Hypertension :

- L-NAME (NOS inhibitor) +NaCl diet
- Angiotensin II
- DOCA (Aldosterone mimetic) + NaCl diet
- Uni-nephrectomized mice

Hypertrophy:

Isoproterenol (beta adrenergic agonist)

Cardiac remodeling and failure:

myocardial infarction, aortic banding

